

(DANRE) sdhb Antibody
Purified Rabbit Polyclonal Antibody (Pab)
Catalog # Azb18722a

Specification

(DANRE) sdhb Antibody - Product Information

Application	WB,E
Primary Accession	A5PL98
Other Accession	P21913 , Q007T0 , Q9COA3 , P21912 , Q9YHT2 , Q3T189
Reactivity	Mouse, Rat, Zebrafish
Predicted	Bovine, Chicken, Human, Pig
Host	Rabbit
Clonality	Polyclonal
Isotype	Rabbit IgG
Calculated MW	31740
Antigen Region	147-182

(DANRE) sdhb Antibody - Additional Information

Gene ID 562149

Other Names

Succinate dehydrogenase [ubiquinone] iron-sulfur subunit, mitochondrial, Iron-sulfur subunit of complex II, Ip, sdhb

Target/Specificity

This (DANRE) sdhb antibody is generated from a rabbit immunized with a KLH conjugated synthetic peptide between 147-182 amino acids from the region of (DANRE) sdhb.

Dilution

WB~~1:1000

E~~Use at an assay dependent concentration.

Format

Purified polyclonal antibody supplied in PBS with 0.09% (W/V) sodium azide. This antibody is purified through a protein A column, followed by peptide affinity purification.

Storage

Maintain refrigerated at 2-8°C for up to 2 weeks. For long term storage store at -20°C in small aliquots to prevent freeze-thaw cycles.

Precautions

(DANRE) sdhb Antibody is for research use only and not for use in diagnostic or therapeutic procedures.

(DANRE) sdhb Antibody - Protein Information

Name sdhb

Function Iron-sulfur protein (IP) subunit of the succinate dehydrogenase complex (mitochondrial respiratory chain complex II), responsible for transferring electrons from succinate to ubiquinone (coenzyme Q) (By similarity). SDH also oxidizes malate to the non- canonical enol form of oxaloacetate, enol-oxaloacetate. Enol- oxaloacetate, which is a potent inhibitor of the succinate dehydrogenase activity, is further isomerized into keto-oxaloacetate (By similarity).

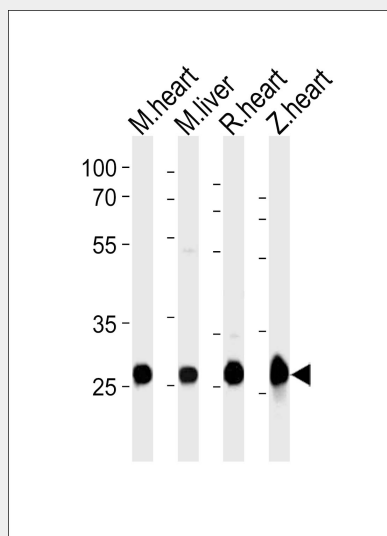
Cellular Location

Mitochondrion inner membrane {ECO:0000250|UniProtKB:Q9YHT2}; Peripheral membrane protein {ECO:0000250|UniProtKB:Q9YHT2}; Matrix side {ECO:0000250|UniProtKB:Q9YHT2}

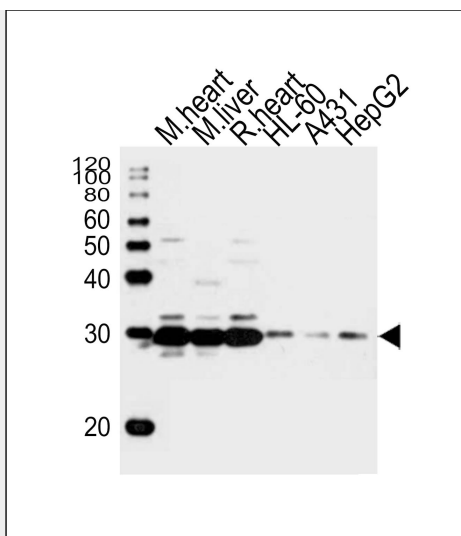
(DANRE) sdhb Antibody - Protocols

Provided below are standard protocols that you may find useful for product applications.

- [Western Blot](#)
- [Blocking Peptides](#)
- [Dot Blot](#)
- [Immunohistochemistry](#)
- [Immunofluorescence](#)
- [Immunoprecipitation](#)
- [Flow Cytometry](#)
- [Cell Culture](#)

(DANRE) sdhb Antibody - Images

Western blot analysis of lysates from mouse heart, mouse liver, rat heart, zebra fish heart tissue lysate (from left to right), using (DANRE) sdhb Antibody (Cat. #Azb18722a). Azb18722a was diluted at 1:1000 at each lane. A goat anti-rabbit IgG H&L(HRP) at 1:10000 dilution was used as the secondary antibody.



Western blot analysis of lysates from mouse heart, mouse liver, rat heart tissue, HL-60, A431, HepG2 cell line (from left to right), using (DANRE) sdhb Antibody (Cat. #Azb18722a). Azb18722a was diluted at 1:1000 at each lane. A goat anti-rabbit IgG H&L(HRP) at 1:10000 dilution was used as the secondary antibody.

(DANRE) sdhb Antibody - Background

Iron-sulfur protein (IP) subunit of succinate dehydrogenase (SDH) that is involved in complex II of the mitochondrial electron transport chain and is responsible for transferring electrons from succinate to ubiquinone (coenzyme Q) (By similarity).